

# DATASHEET

Name:  
Type:  
Designed by:

**KNOT SMALL**  
Pendant Light  
Chiaramonte Marin



## DESCRIPTION

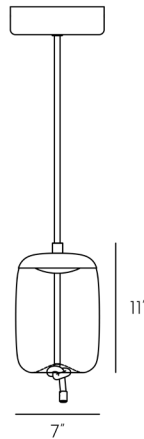
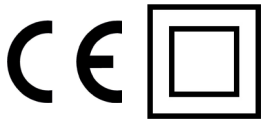
Knot is a collection of stately pendent lights that appose two dramatically dissimilar materials. The design combines coarse natural fibre with smooth, transparent handblown glass to arouse a contrast as striking as it is dignified.

## TECH. DESCRIPTION

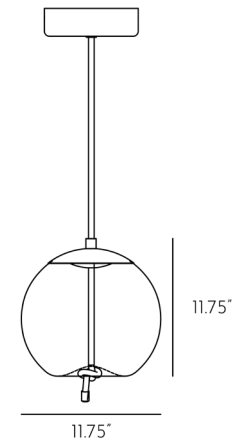
The light comprises a glass shade, glass diffuser, metal component with LED module, and linen rope and is suspended from the ceiling canopy with a special bracket. The bottom section of the light is engineered as SELV.



## CERTIFICATES



Product ID: PC1034



Product ID: PC1035

## CONSTRUCTION SPECIFICATIONS

**Weight:** 3.5 kg  
**Construction material:** Glass, metal, linen rope  
**Cord Length:** Individual, max. 5,000 mm  
**Mounting:** Ceiling  
**Environment:** Indoor

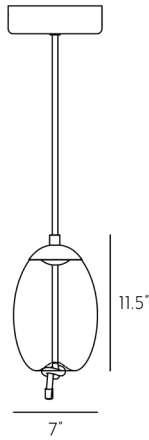
**Weight:** 3.5 kg  
**Construction material:** Glass, metal, linen rope  
**Cord Length:** Individual, max. 5,000 mm  
**Mounting:** Ceiling  
**Environment:** Indoor

## ELECTRICAL SPECIFICATIONS

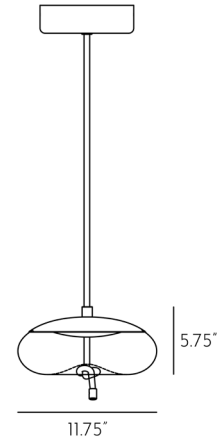
**Input voltage [V]:** 100 - 240 V  
**Frequency [Hz]:** 50-60 Hz  
**Max. power [W]:** 10 W  
**Coverage IP:** 20  
**Socket:** LED module  
**Light source:** -  
**Energy class:** A+

**Input voltage [V]:** 100 - 240 V  
**Frequency [Hz]:** 50-60 Hz  
**Max. power [W]:** 10 W  
**Coverage IP:** 20  
**Socket:** LED module  
**Light source:** -  
**Energy class:** A+





Product ID: PC1036



Product ID: PC1037

**CONSTRUCTION SPECIFICATIONS**

**Weight:** 3 kg  
**Construction material:** Glass, metal, linen  
**Cord Length:** Individual, max. 5,000 mm  
**Mounting:** Ceiling  
**Environment:** Indoor

**Weight:** 3.5 kg  
**Construction material:** Glass, metal, linen  
**Cord Length:** Individual, max. 5,000 mm  
**Mounting:** Ceiling  
**Environment:** Indoor

**ELECTRICAL SPECIFICATIONS**

**Input voltage [V]:** 100 - 240 V  
**Frequency [Hz]:** 50-60 Hz  
**Max. power [W]:** 6 W  
**Coverage IP:** 20  
**Socket:** LED module  
**Light source:** -  
**Energy class:** A+

**Input voltage [V]:** 100 - 240 V  
**Frequency [Hz]:** 50-60 Hz  
**Max. power [W]:** 10 W  
**Coverage IP:** 20  
**Socket:** LED module  
**Light source:** -  
**Energy class:** A+

**LED SOURCE**

**Type:** LED module  
**Lamp wattage [W]:** 10 W  
**Input voltage [V]:** 24 VDC  
**Energy class:** A+  
**Flux [lm]:** 1510 lm  
**Light colour [K]:** 2700K  
**CRI:** 80+  
**Lifespan [h]:** 20,000 hr  
**Dimmable:** yes (PWM)



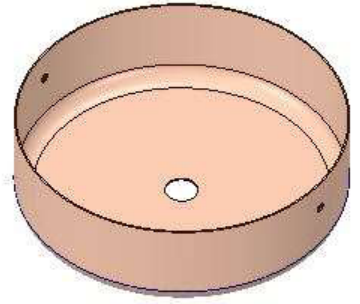
Product ID: CM6131

# CEILING CANOPY

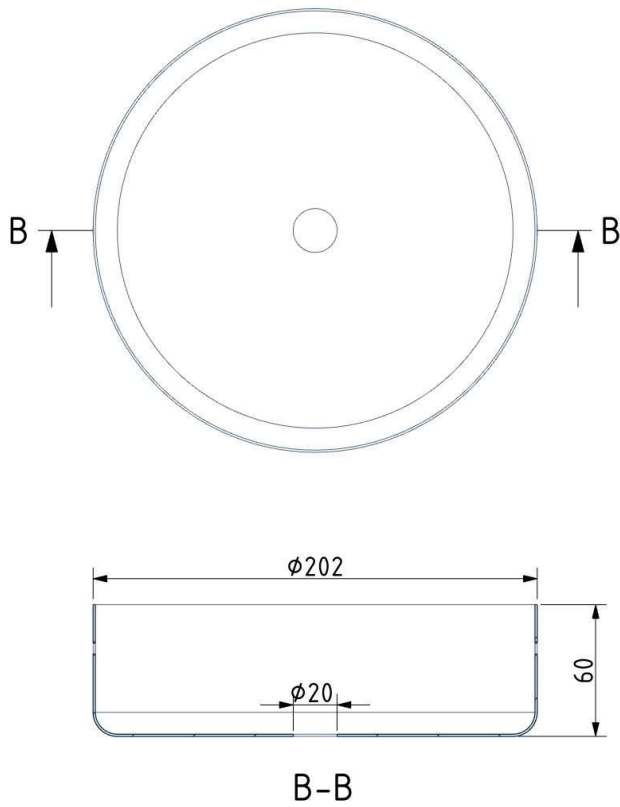
Dimensions  $\varnothing$  x w [in/mm] 8" x 2.35" / 202 x 60 mm

Weight [kg] 1.15 kg

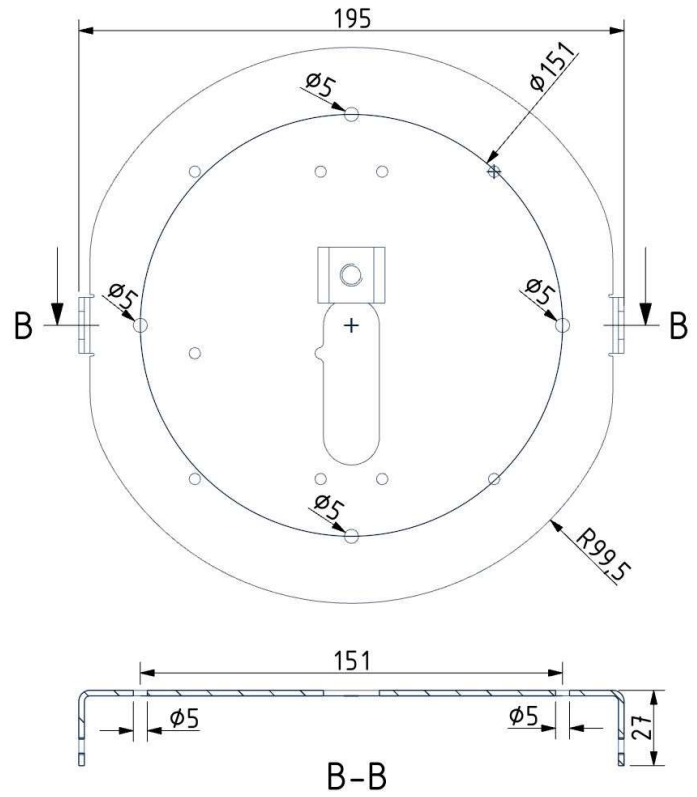
Material metal



## Drawing



## Canopy bracket



# PRODUCT DETAILS

## Glass Colour

Transparent glass	CGC23
Smoke grey - transparent glass	CGC516
Smoke brown - transparent glass	CGC538
Opaline - transparent glass	CGC38

## Glass Surface

Glossy finish	CGSU66
Matte inner glass finish	CGSU880

## Body Finishes

Copper	CCS584
Brass	CCS69
Chrome black	CCS959
Brushed stainless steel	CCS68
Black matte powder coating with structure	CCS2673

## Canopy Finishes

Copper	CCSC896
Brass	CCSC897
Chrome black	CCSC975
Brushed stainless steel	CCSC974
Black matte powder coating with structure	CCSC2674

## Rope

Rope - natural	CRP970
----------------	--------

## LED Source

24V, LED, 10W, 2700K, 1510lm, RA80+, DIM	LEDS1910
--	----------

## Dimmable version

Non-dimmable version	CEDV1457
RF system - remote control version	CEDV1461
PWM Single	CEDV1459
1-10V	CEDV1460
DALI version	CEDV1458
AC phase-out	CEDV1730